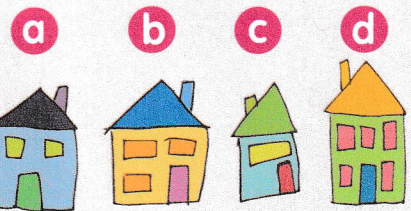
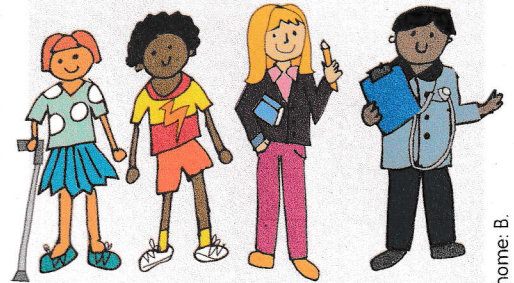


IN THE GOSPEL TODAY

Jesus tells his friends he is going to die before rising again. Jesus says that he must follow God's plan. Doing what God asks is not always easy, but it will make us happy in the end!

Whose house?

Charlotte's house has more than two windows and is not the widest. The doctor's house has fewer than three windows and the front door is in the middle of the house. The teacher's house has one more window than the doctor's and two more windows than Jonah's.



Charlotte, Jonah, a doctor and a teacher all need to find their way home.
Who lives in which house?

A PRAYER TO SAY

Dear Jesus, you know me completely. Help me to follow you and keep going the right way so that I can be happy with you. Amen.

Answers: Whose house: Charlotte = d, Jonah = c, teacher = b, doctor = a. Happy to be home: B.

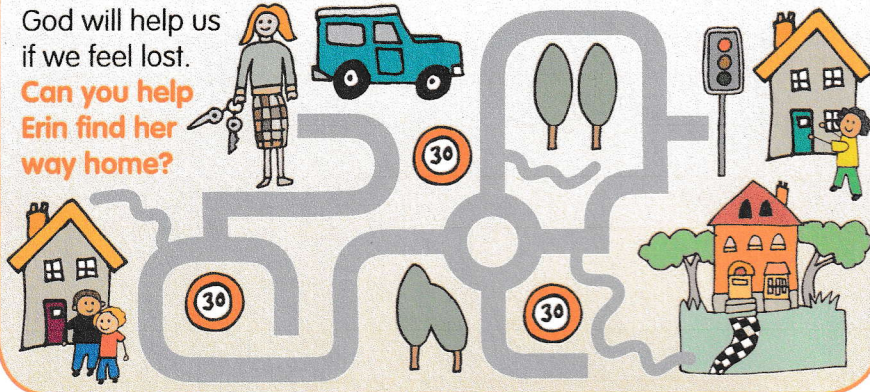


My name is _____

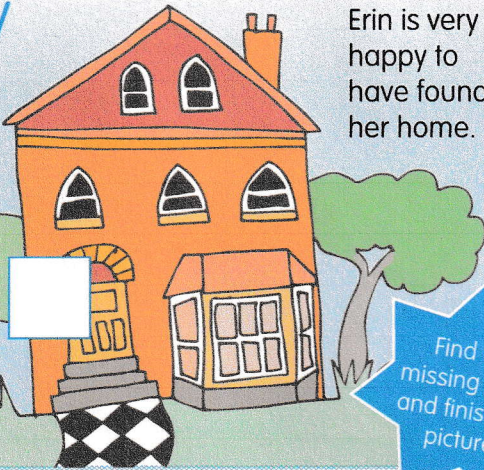
GOD'S PLAN

God will help us if we feel lost.

Can you help Erin find her way home?



Happy to be home



Erin is very happy to have found her home.

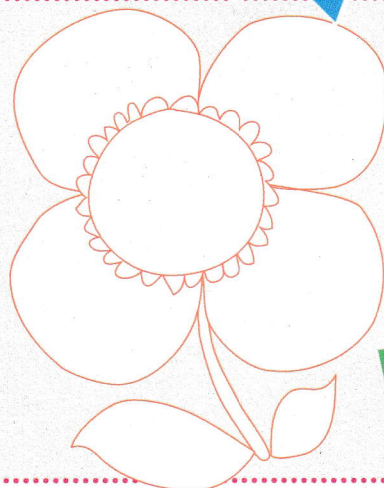


Find the missing piece and finish the picture.

Jesus gives us life

Following Jesus isn't easy, but it will bring us life and make us happy.

How can we be like Jesus today?



Write or draw your ideas in the petals

